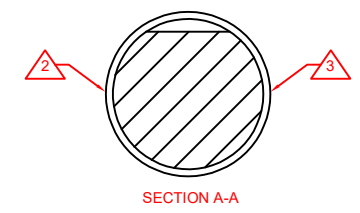
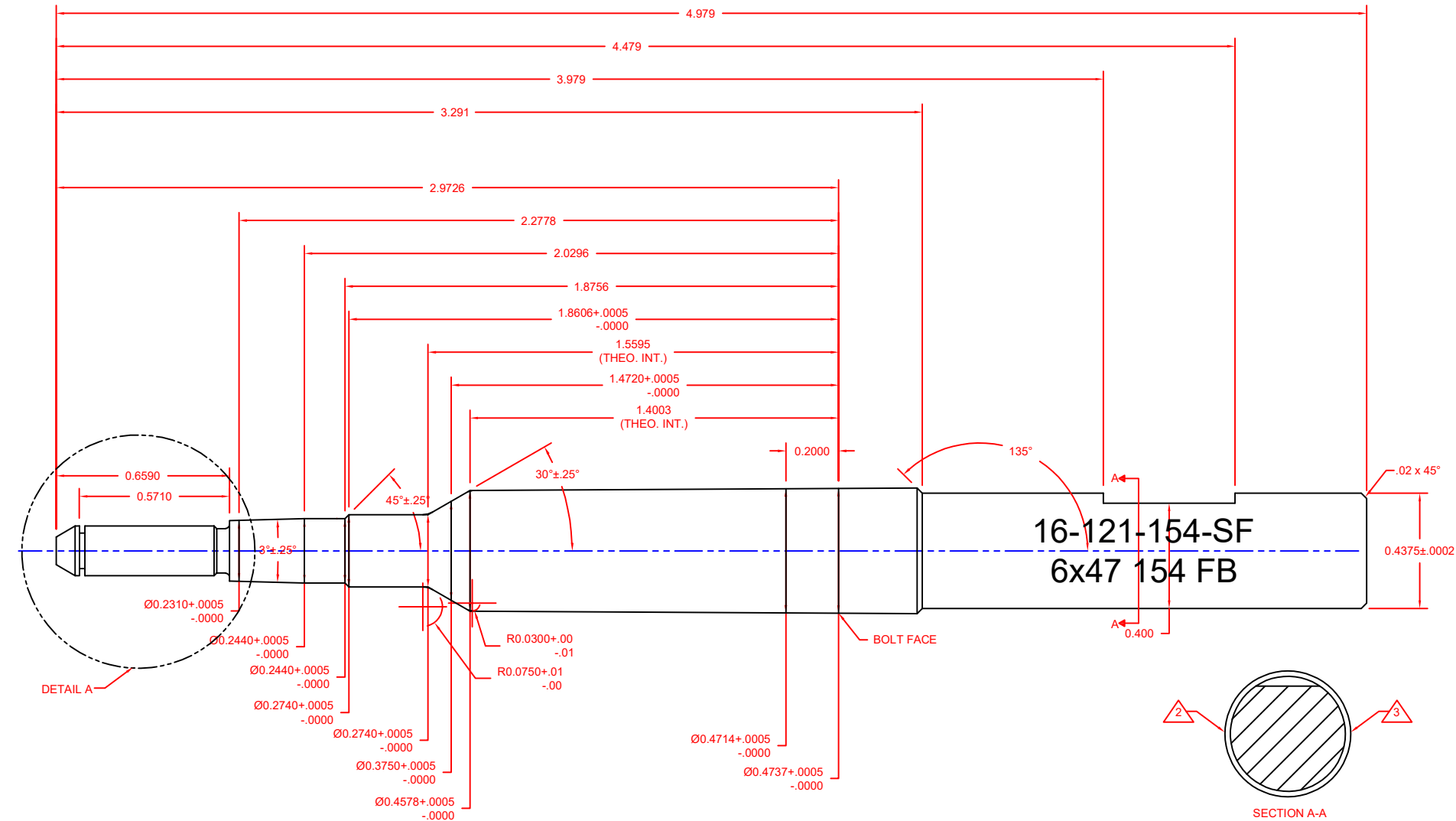
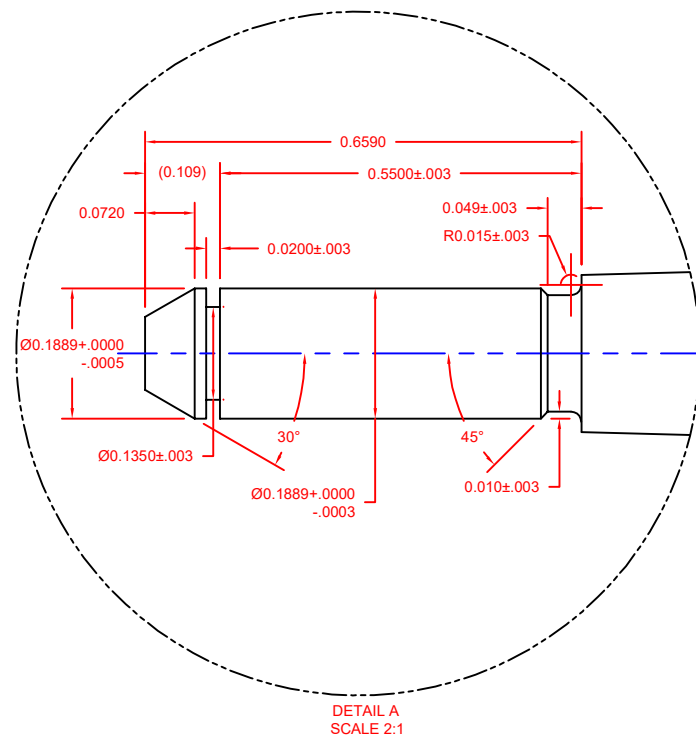


REVISIONS		
REV.	DESCRIPTION	DATE
A	INITIAL DRAWING	10/28/2022

NOTES:

- 1) MATERIAL: CARBIDE
- 2) LASER MARK PART NUMBER, CALIBER OF REAMER AND INDICATED FREEBORE LENGTH NEATLY AND LEGIBLY WHERE INDICATED ON PART USING 0.10 INCH HIGH CHARACTERS. APPLICATION MUST NOT RAISE MATERIAL.
EXAMPLE: 16-121-154-SF
6x47 154 FB
- 3) LASER MARK SERIAL NUMBER, NEATLY AND LEGIBLY WHERE INDICATED ON PART USING 0.09 INCH HIGH CHARACTERS. APPLICATION MUST NOT RAISE MATERIAL.
- 4) FLUTED PILOT PLEASE
- 5) COATING: TID2
- 6) ALL DIMS APPLY TO FINISHED PART



SPECIFICATIONS	
DIMENSION	TOLERANCE
0.XXXX	+/- 0.0005
0.XXX	+/- 0.005
0.XX	+/- 0.015
0.X	+/- 0.03
ANGULAR DIM	+/- 30'
SURFACE FINISH UNLESS OTHERWISE INDICATED	16
BREAK ALL SHARP EDGES	TSC= THEO. SHARP CORNER

ALPHA MUNITIONS				
TITLE	6x47 REAMER, STRAIGHT FLUTE			
DATE	10-28-2022			
SIZE	DRAWING NUMBER	SHEET	UNITS	REV
	16-121-154	1 OF 1	INCH	A

ALPHA MUNITIONS PROPRIETARY
THIS DOCUMENT AND THE DATA DISCLOSED HEREIN OR HERewith IS NOT TO BE REPRODUCED, USED OR DISCLOSED IN WHOLE OR IN PART TO ANYONE WITHOUT THE WRITTEN PERMISSION OF ALPHA MUNITIONS